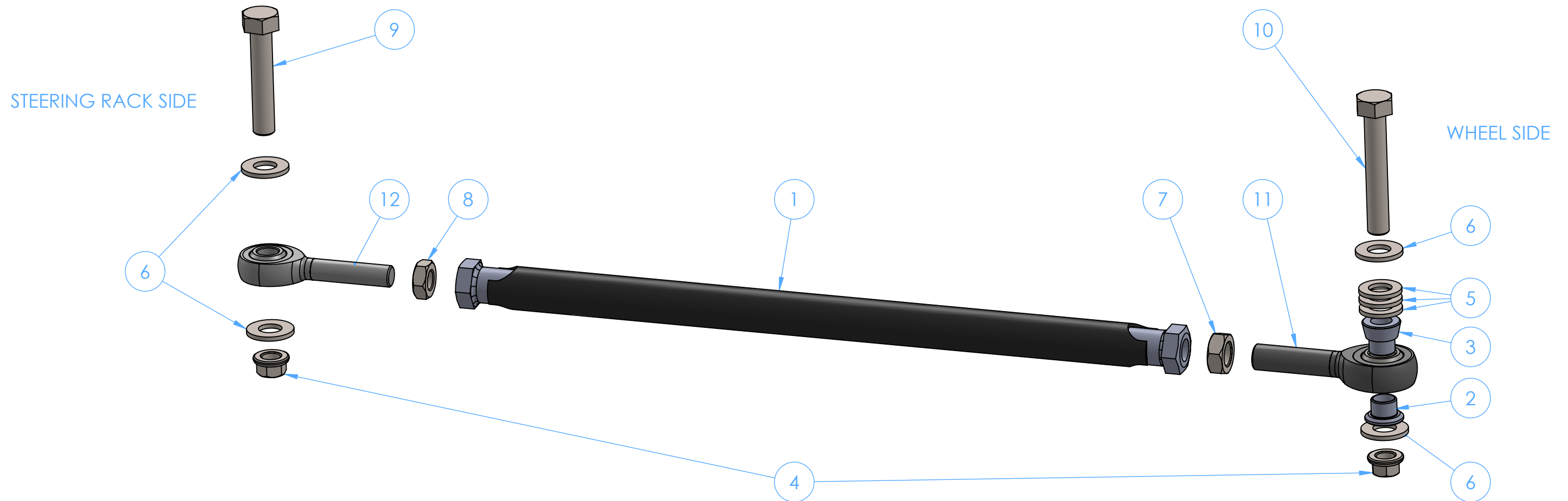

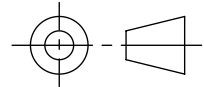


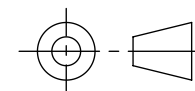
ITEM NO.	PART NUMBER	DESCRIPTION	QTY.
1	NP01-10-010	TRACK ROD	1
2	NP01-10-015	TOP HAT - TIE ROD OUTER	1
3	NP01-10-028	TOP HAT - 5/6 X 3/8	1
4	PA-0003	5/16 K-Nut	2
5	PA-0007	AN 5/16 Washer	3
6	PA-0008	AN 5/16 Washer Thin	4
7	PA-0192	Jam Nut 3/8-24 RH	1
8	PA-0194	Jam Nut 5/16-24 LH	1
9	PN-0184	NAS 1105-13	1
10	PN-0016	NAS 1305-20	1
11	PR-0150	Rod End 3/8-24 RH	1
12	PR-0154	Rod End 5/16-24 LH	1



01	ISSUED FOR MANUFACTURE		0187	GY	9/22/15
ISSUE	MODIFICATIONS		ECN REF	BY	DATE
 <p>LESS STATED 005 .01 .03 t: 125 mu ±0.5° S ARE IN S STATED RP EDGES</p>	<p>TITLE:</p> <p>ANP01-10010</p>		<p>PART NO:</p> <p>TRACK ROD ASSEMBLY</p>		
			<p>MATERIAL:</p>		
	 <p>THIS DRAWING IS THE PROPERTY OF EMT AND IS LOANED ON THE UNDERSTANDING THAT THE DRAWING AND THE INFORMATION CONTAINED HEREIN WILL NOT BE REPRODUCED, COPIED DIRECTLY OR INDIRECTLY, IN WHOLE OR IN PART, OR USED FOR THE MANUFACTURE OF ANY PARTS SHOWN HEREIN, EXCEPT WITH THE WRITTEN PERMISSION OF EMT. ACCEPTANCE OF THIS DRAWING WILL BE CONSTRUCTED AS ACCEPTANCE OF THE FOREGOING CONDITIONS.</p>		<p>SCALE:</p> <p>1:1.5</p>	<p>FINISH:</p>	
			<p>DRAWN:</p> <p>GY</p>		
		<p>CHK'D:</p> <p>-</p>	<p>PER CAR:</p> <p>2</p>		
		<p>DATE:</p> <p>9/22/15</p>			

élan
TECHNOLOGIES

TOLERANCES UNLESS STATED
3 dp: ± 0.005
2 dp: ± 0.01
1 dp: ± 0.03
SURFACE FINISH: 125 mu
ANGULAR: $\pm 0.5^\circ$
ALL DIMENSIONS ARE IN
INCHES UNLESS STATED
BREAK ALL SHARP EDGES



THIS DRAWING IS THE PROPERTY OF EMT AND IS LOANED ON THE UNDERSTANDING THAT THE DRAWING AND THE INFORMATION CONTAINED HEREIN WILL NOT BE REPRODUCED, COPIED DIRECTLY OR INDIRECTLY, IN WHOLE OR IN PART, OR USED FOR THE MANUFACTURE OF ANY PARTS SHOWN HEREIN, EXCEPT WITH THE WRITTEN PERMISSION OF EMT. ACCEPTANCE OF THIS DRAWING WILL BE CONSTRUED AS ACCEPTANCE OF THE FOREGOING CONDITIONS.

SCALE:	1:1.5
DRAWN:	GY
CHK'D:	-
DATE:	9/22/15

EQ#	REF#	BY	DATE
PART NO:			
TRACK ROD ASSEMBLY			
MATERIAL:			
FINISH:			
PER CAR:			
2			